
APPLICATIONS :

- Steam & Water Sampling Systems
- Automatic Thermostatic Bypass
- Thermostatic Flow Control
- High or Low Temperature Relief
- High Temperature Safety Shutoff
- Thermostatic Drain Valve
- Thermostatic Cooling water Control
- Thermostatic Condensate Drain
- Heat Exchangers

OPERATION :

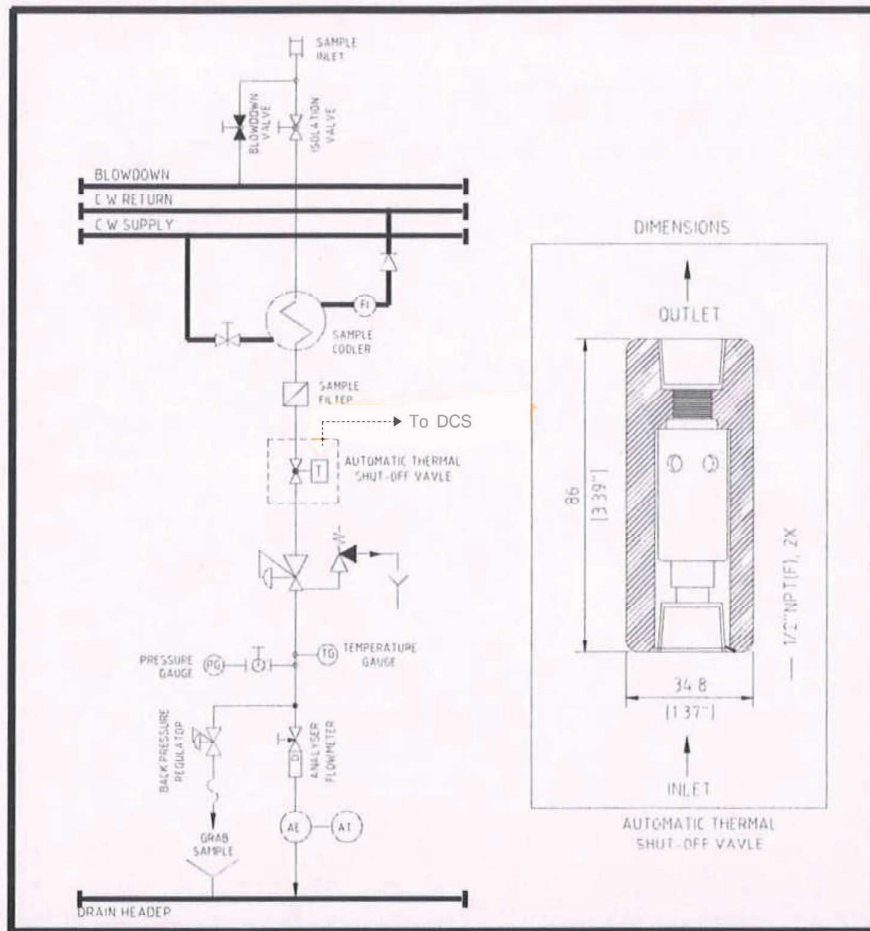
This valve is installed in the down stream of sampling systems/heat exchanger. The valve responds only to temperature. Under the normal operation the valve is fully open. If the sample temperature increases within the operating temperature, the thermal actuator modulates the valve to close the inlet orifice. The valve automatically opens as the operating conditions are restored.

The heart of this valve is a solid to liquid phase change thermal actuator. The actuator contains Thermoloid® compound which changes phase from solid to a liquid as the temperature increases. As phase change occurs, the volumes of Thermoloid® material changes significantly. Since Thermoloid® is essentially incompressible under normal operating loads & is sealed into a rigid actuator housing, only piston can move and extend as the volume increases. This motion is used to open or close the valve.

FEATURES :

- Automatic: No reset or Operator involvement required
- Alarm contacts for DCS so, user knows about alarm condition.
- Rugged, Compact Design, Easy Installation, Fast response
- Reliable Shut-off: Ram-type plug design provides tight seal upon shutoff
- Operating temperatures unaffected by pressure
- Wide Choice of Set points
- Corrosion Resistant: Materials Stainless steel and Teflon to reduce contamination of Sample
- Operates in any orientation
- Maintenance free

Maximum Pressure	Max Body Temperature	Sample Connection	Wetted Parts	Set Point (Deg C) (Open-Close) (Factory set from 10 Deg to 250Deg F)
3000 PSI	600 °F	1/2"NPT(F)	Stainless Steel	Std : 105 °F - 115 °F Other ranges available on request.
300 PSI	600 °F	1/4"OD, 3/8"OD, 1/2"OD	Stainless Steel	Std : 110 °F - 120 °F Other ranges available on request.



Data Required for Valve selection

- Sample inlet temperature
- Sample inlet pressure
- Sample cut-off Temperature required
- Application (Liquid, water, Gas)
- End connection required

Other products

- Sample coolers
- Pressure reducers
- Steam and Water Analysis Systems
- Back pressure regulators
- Sample sequencers
- Sample Manifolds
- Valves and Manifolds
- Liquid and Gas analysers



STEAM EQUIPMENTS PVT LTD
 PLOT NO - 44, TINY INDUSTRIAL ESTATE
 KONDHWA BUDRUK, PUNE - 411048
 MAHARASHTRA, INDIA
 PHONE : +91-20-26930908
 FAX : +91-20-26930959
 Email : sales@steamequipments.com
<http://www.steamequipments.com>

Representatives:
 India: Pune, Mumbai, Delhi, Bangalore,
 Hyderabad, Chandigarh, Goa, Surat,
 Raipur, Jamshedpur
 Overseas: UAE, Oman, Saudi Arabia,
 Indonesia, Malaysia, Hongkong, USA,
 S. Korea, United Kingdom, Kuwait, Spain,
 France, S. Africa, Singapore, Brazil, Japan.