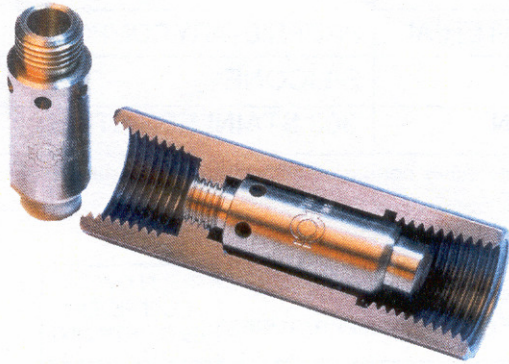




STEAM
Equipments

THERM-O-TECH INC

HIGH TEMP SAMPLE SHUTOFF VALVE



APPLICATIONS

- Steam & Water Sampling Systems
- Automatic Thermostatic Bypass
- Thermostatic Flow Control
- High or Low Temperature Relief
- High Temperature Safety Shutoff
- Thermostatic Drain Valve
- Thermostatic Cooling water Control
- Thermostatic Condensate Drain
- Heat Exchangers

OPERATION

This valve is installed in the down stream of sampling systems/heat exchanger. The valve responds only to temperature. Under the normal operation the valve is fully open. If the sample temperature increases within the operating temperature (120°F), The thermal actuator modulates the valve to close the inlet orifice. **The valve automatically opens as the thermal actuator cools.**

The heart of this valve is a solid to liquid phase change thermal actuator. The actuator contains Thermoloid® compound which changes phase from solid to a liquid as the temperature increases. As phase change occurs the volumes of Thermoloid® material changes significantly with the liquid volume greater than the solid volume. Since Thermoloid® is essentially incompressible under normal operating loads & it is sealed into a rigid actuator housing, only piston can move and extend as the volume increases. This motion is used to open or close the valve.

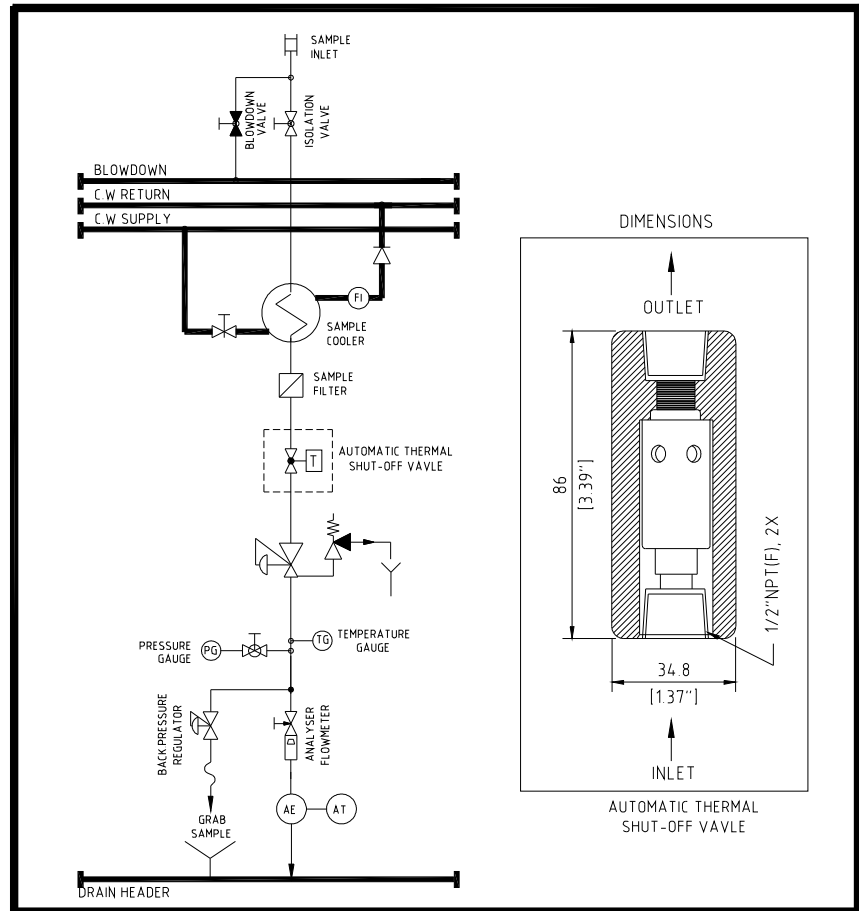
SPECIFICATIONS

FEATURES

- AUTOMATIC:** No reset or Operator involvement required
- NO** outside Power Source required
- Rugged, Compact Design, Easy Installation, Fast response
- Reliable Shut-off :** Ram-type plug design provides tight seal upon shutoff
- Operating temperatures unaffected by pressure
- Wide Choice of Set points
- Corrosion Resistant:** Materials Stainless steel and Teflon to reduce contamination of Sample stream
- Operates in any orientation
- Maintenance free

Model No	Maximum Pressure	Max Body Temp	Sample Connection	Wetted Parts	Set Point (Deg C) (Open-Close) (Factory set from 10 Deg to 250Deg F)
½"-HST-105-115	3000 PSI	600°F	½"NPT(F)	Stainless Steel	Std : 105°F - 115°F Other ranges available on request.

DRAWING & TYPICAL INSTALLATION



THERM-OMEGA-TECH INC
 353, IVYLAND ROAD
 WARMINSTER,
 PA 18974-2206, USA

Authorized Representatives in India
STEAM EQUIPMENTS Pvt Ltd
 Plot No- 44, Tiny Industrial Estate
 Kondhwa Budurk, Pune-411 048
 MAHARASHTRA, INDIA
 ☎ : 020-26930908, 2693 0959
 E-mail : steamequip@vsnl.net
sales@steamequipments.com
<http://www.steamequipments.com>